

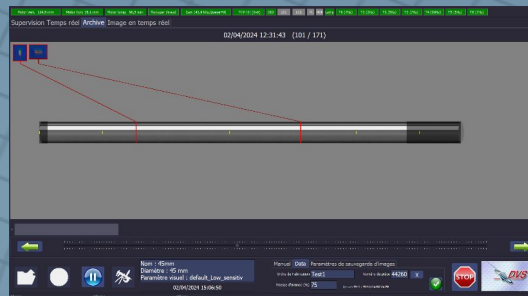
# 360° Inline Surface Inspection with BE-150



The inline system inspects round steel, tubes or other material for surface defects such as scratches, blowholes, holes, dents and other deformations.

The BE-150 sensor head is used on rotating cylindrical objects endless or not. Either the products to be inspected move forward or the sensor head can be moved over a rotating object not moving forward. When an error is detected, a digital signal for logging and a signal for controlling a marker are output.

The image grabbing unit is available in different variants, each on the diameter range, the maximum speed and the smallest error size coordinated.



BE-150

## Features

- Very high sensitivity for error detection
- Error images are visualized and can be saved with time stamp and product code
- Self-adjustment mode

## Customer benefits

- Continuous logging of product quality
- Complete 360° inspection
- Automatic settings to different diameters
- Employee-independent, objective and reproducible inspection results
- Images of each error for process optimization

## Tubes / pipes



## Round steel

